



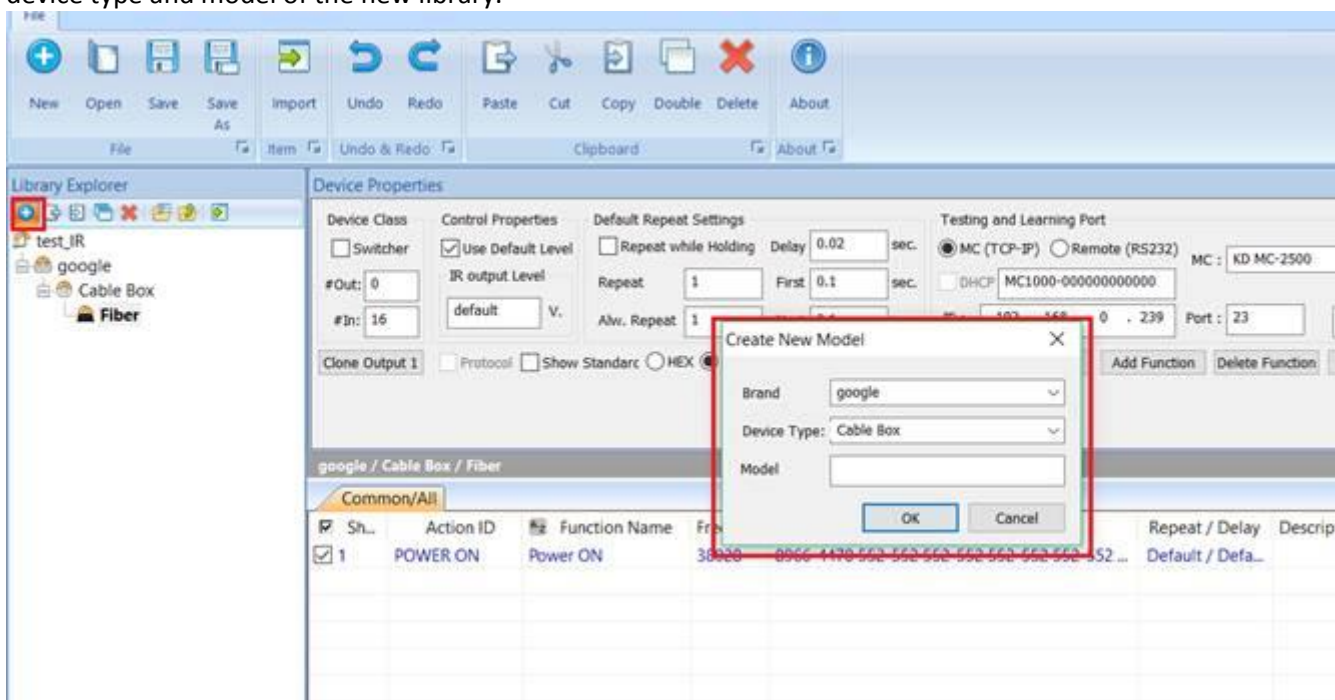
# How to Create IR Commands

## According to Hex Protocol

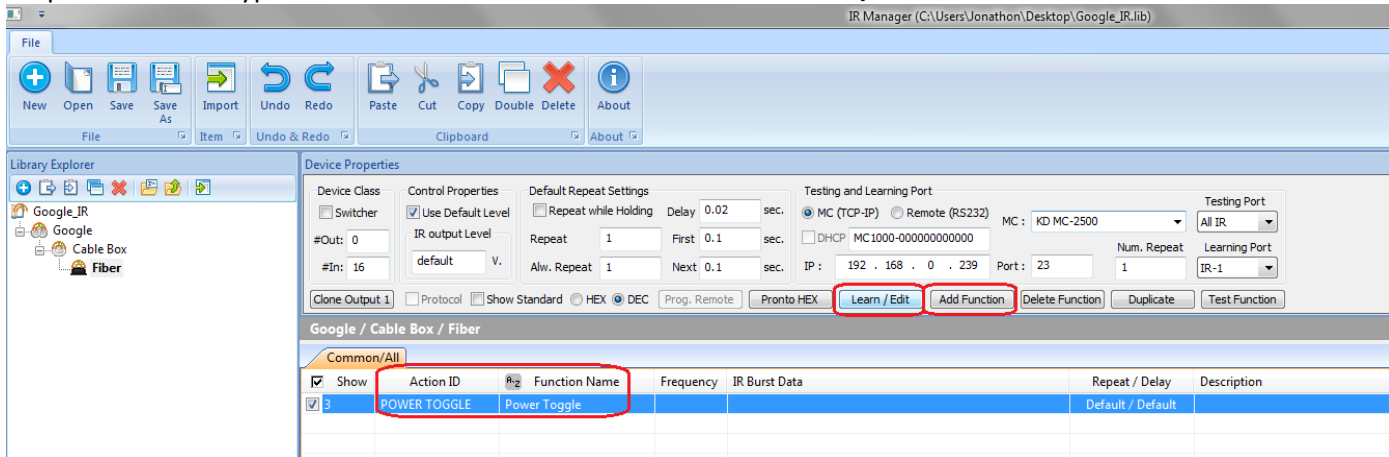
1. Open the Compass Control **IR Manager** software and create a **New** library. Name the library and save it in a convenient way.



2. In the Library Explorer tab on the left click the **blue plus button** to create a new device, fill out the brand, device type and model of the new library.

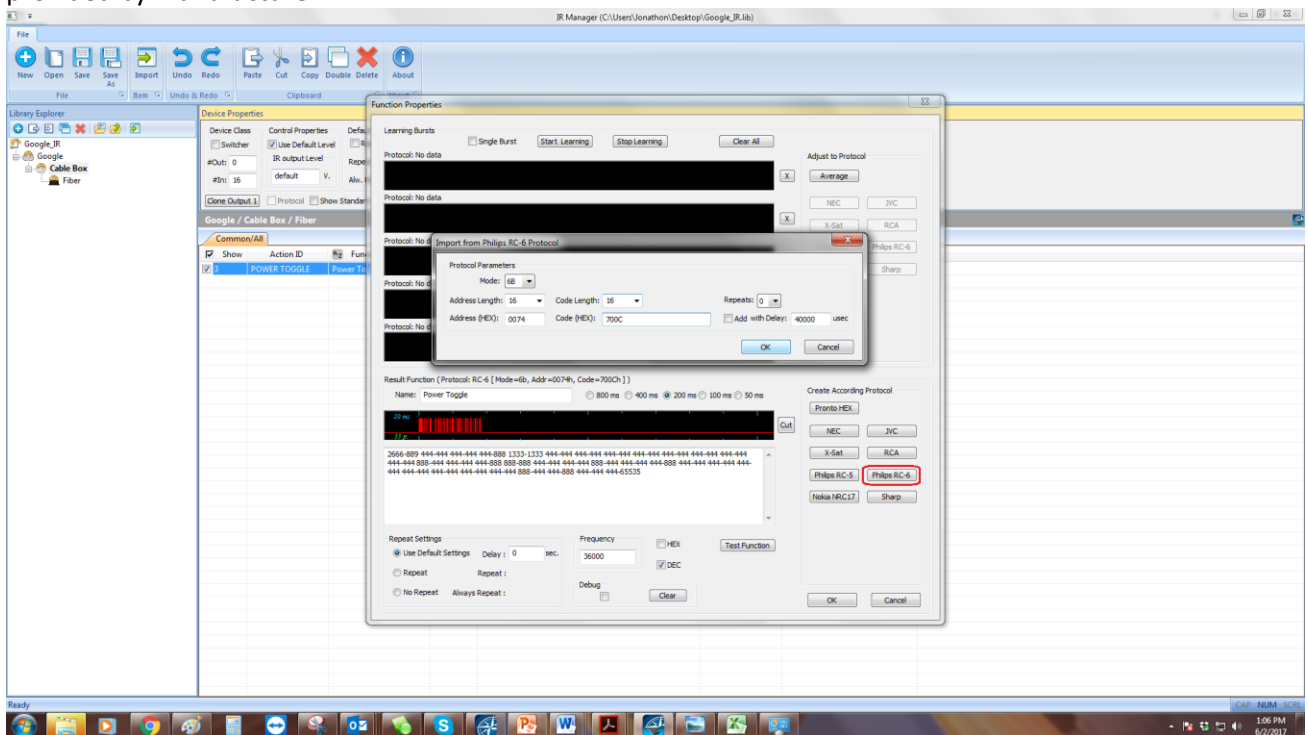


3. Click **Add Function**. Assign the Action ID by double clicking the cell that says "Custom" and choosing from the drop down menu. Type the desired **function name**. Double click "Learn/Edit "



4. In the Function Properties window, select the correct **Create According to Protocol** button

Enter Mode, Address Length, Code Length, Address (HEX), and Code (HEX) data according to protocol sheet provided by manufacturer.



5. Enter the correct IP address and testing port and press Test Function button. Mount IR Emitter on controlled device, and press **Test Function** button to verify if your imported command works.

