

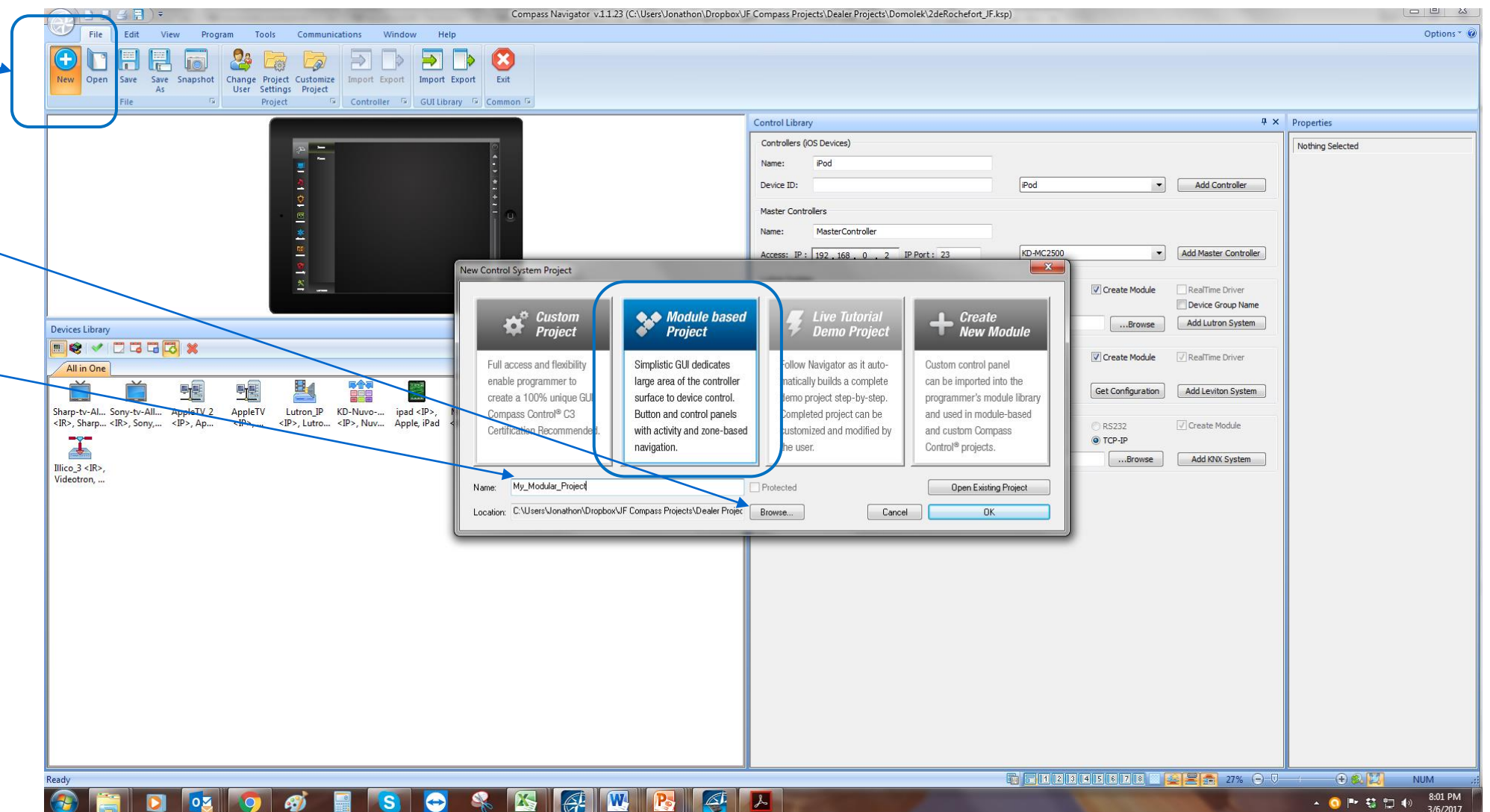


# Compass Control®

## C1+ Modular Programming Steps

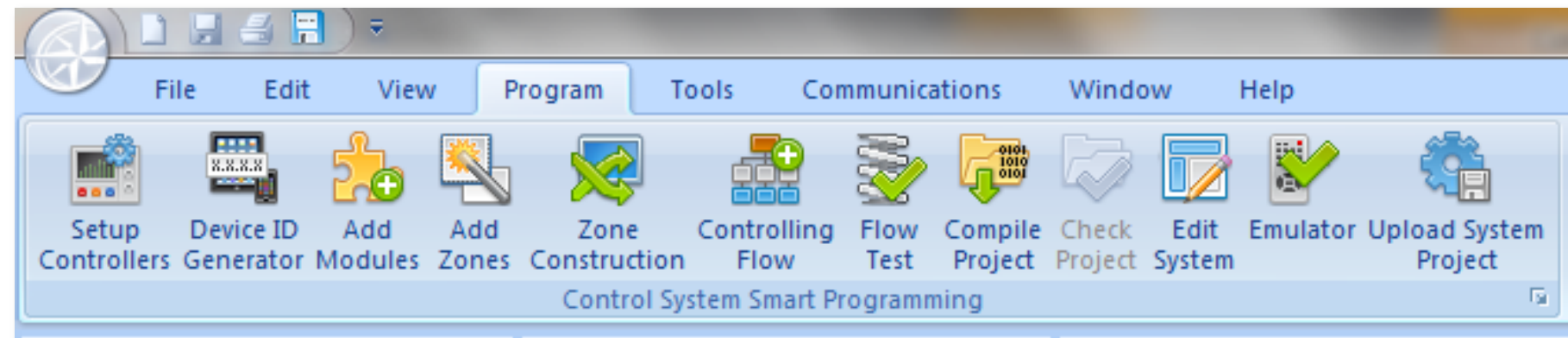
## Modular Programming Steps

- Create a new module based project
- Browse to find folder for saving
- Enter desired name of project
  - No spaces or special characters
  - Use “\_” instead of “-”



## Modular Programming Steps

- Work from Left to Right



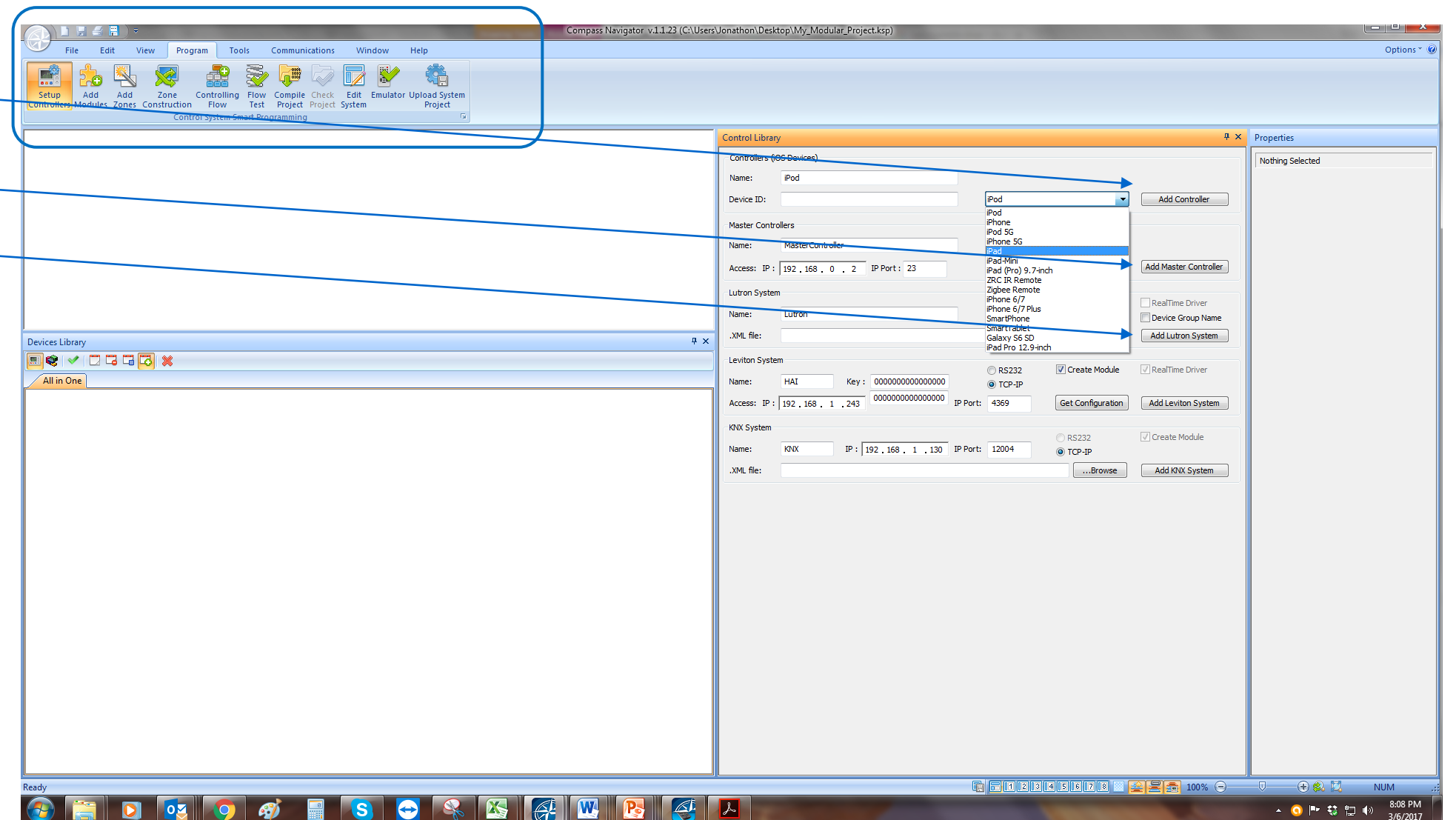
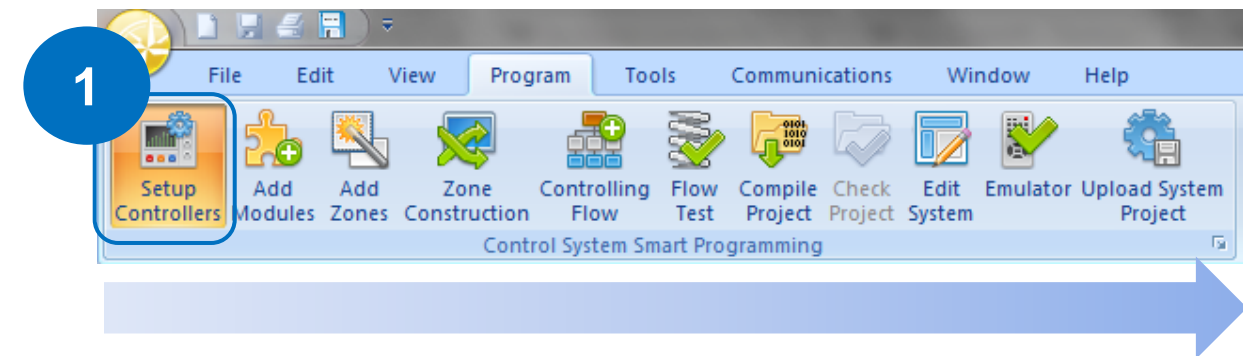
**Modular Programming Steps**

## Modular Programming Steps

- Work from Left to Right

### 1. Setup Controllers

1. Adding iOS, Android controllers
2. Master Controllers
3. Lutron & Leviton S&A

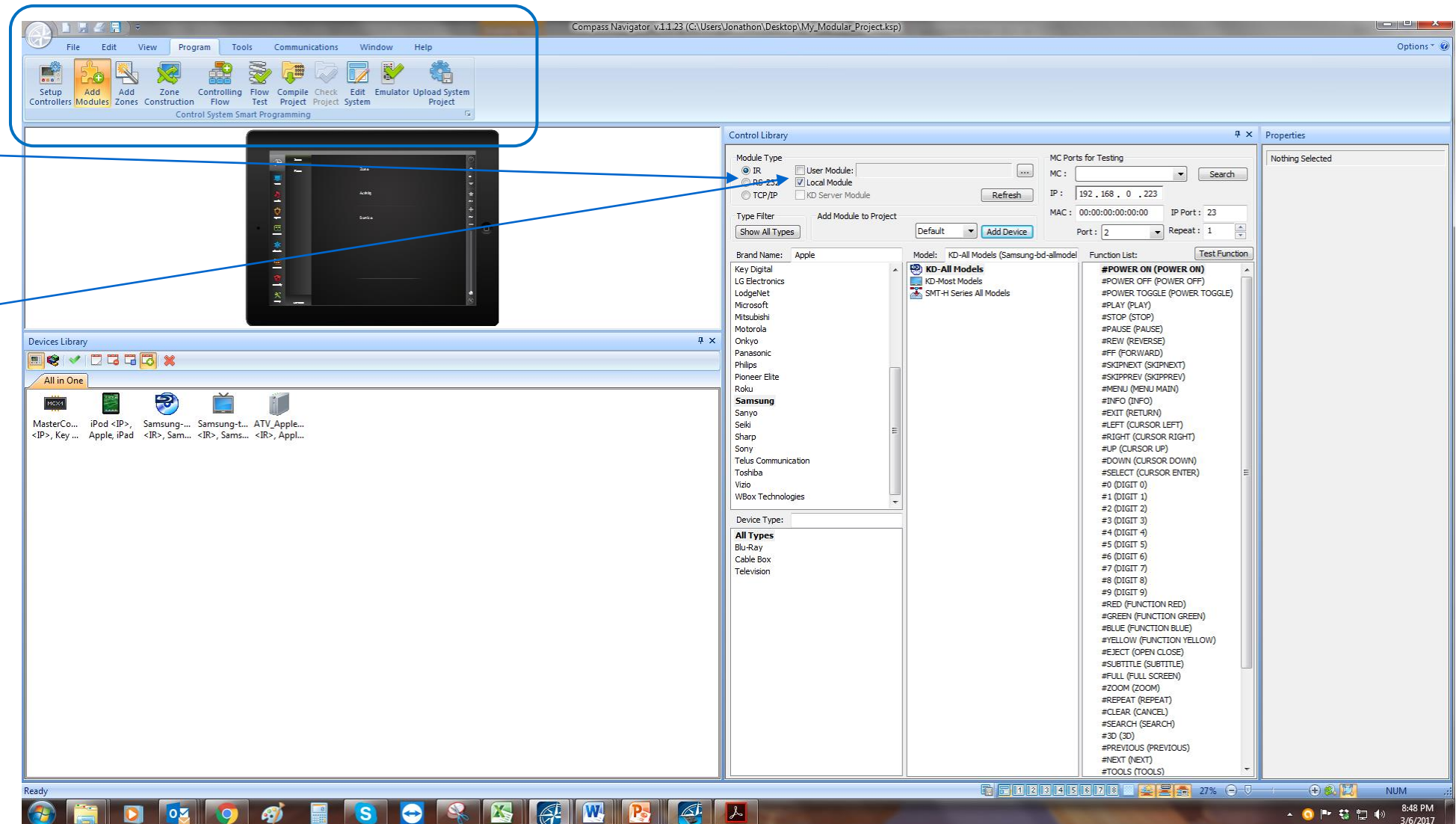
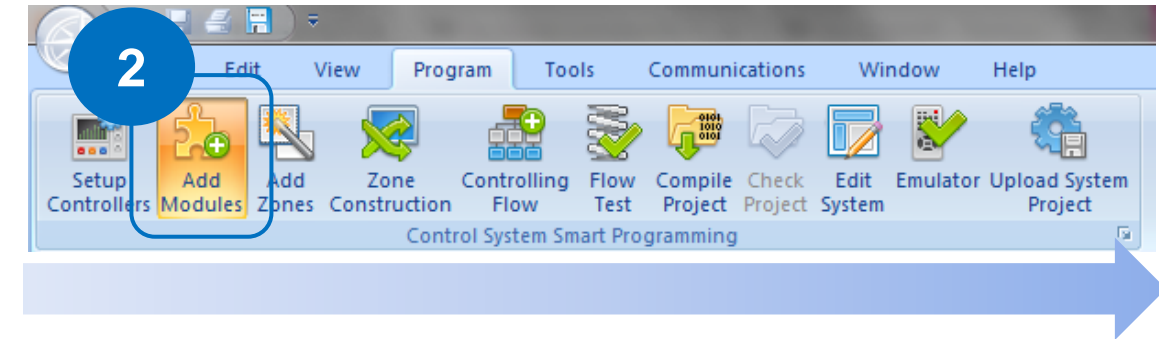


## Modular Programming Steps

- Work from Left to Right

### 2. Add Modules

1. All controlled devices
2. Filter by IR, RS-232, TCP/IP
3. “Empty” (aux non-controlled devices)
4. Custom/downloaded “user” modules



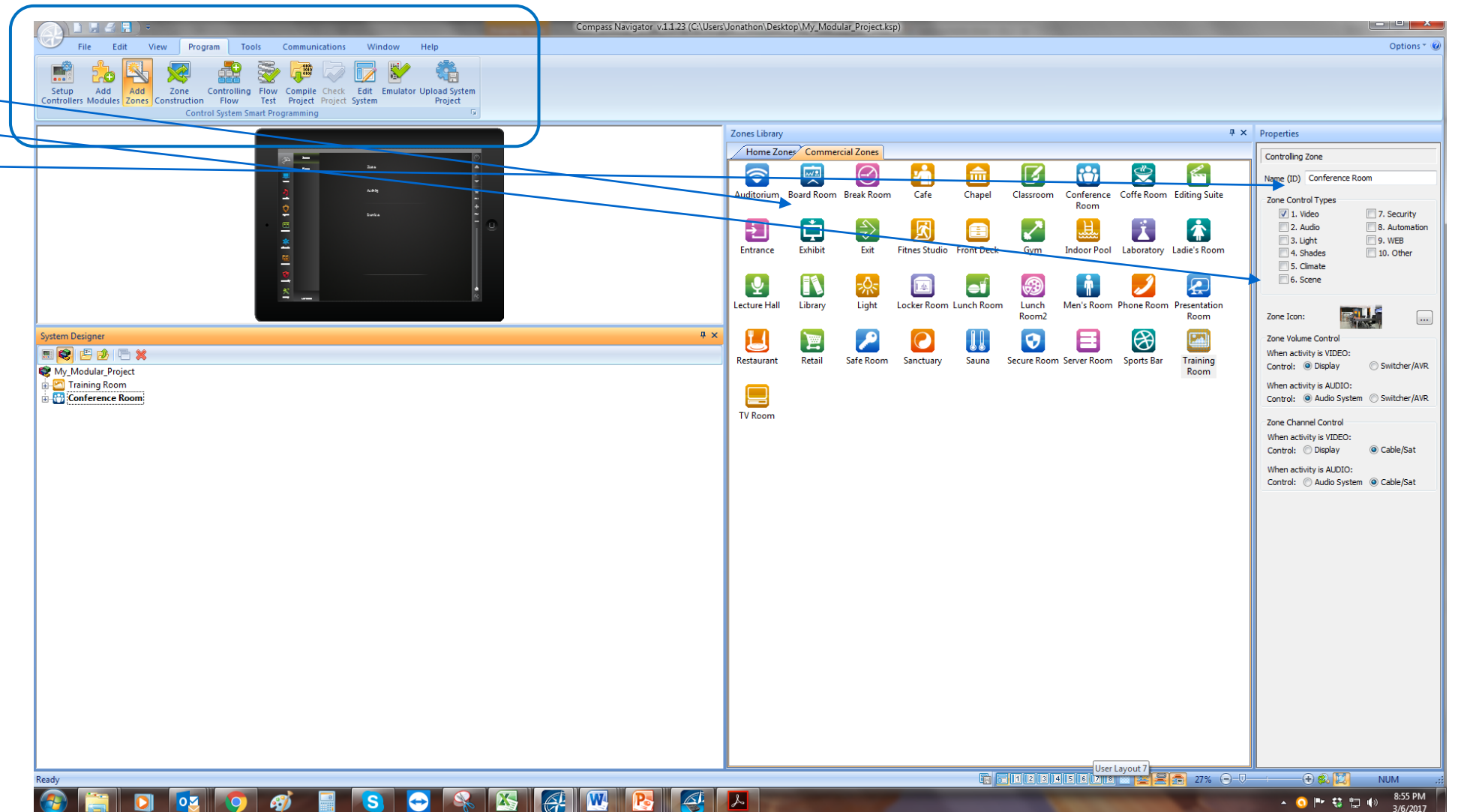
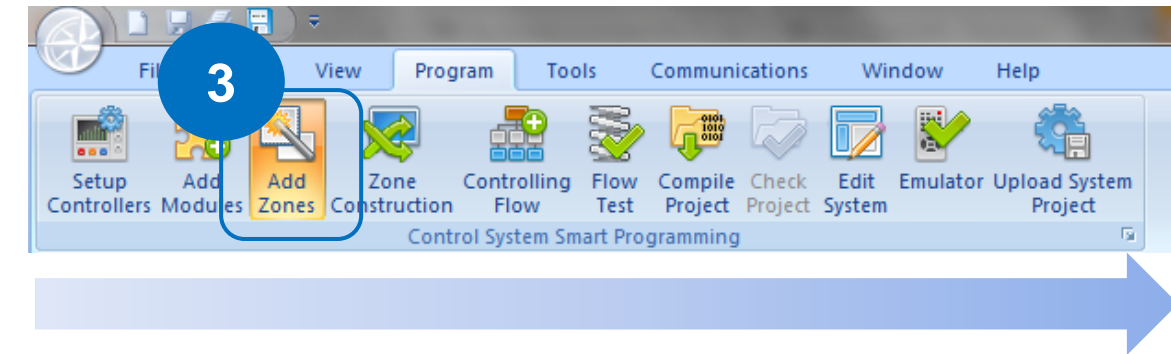


## Modular Programming Steps

- Work from Left to Right

### 3. Add Zones

1. Add activities to each
2. Re-name zones if desired
3. Lutron & Leviton S&A systems automatically import zones

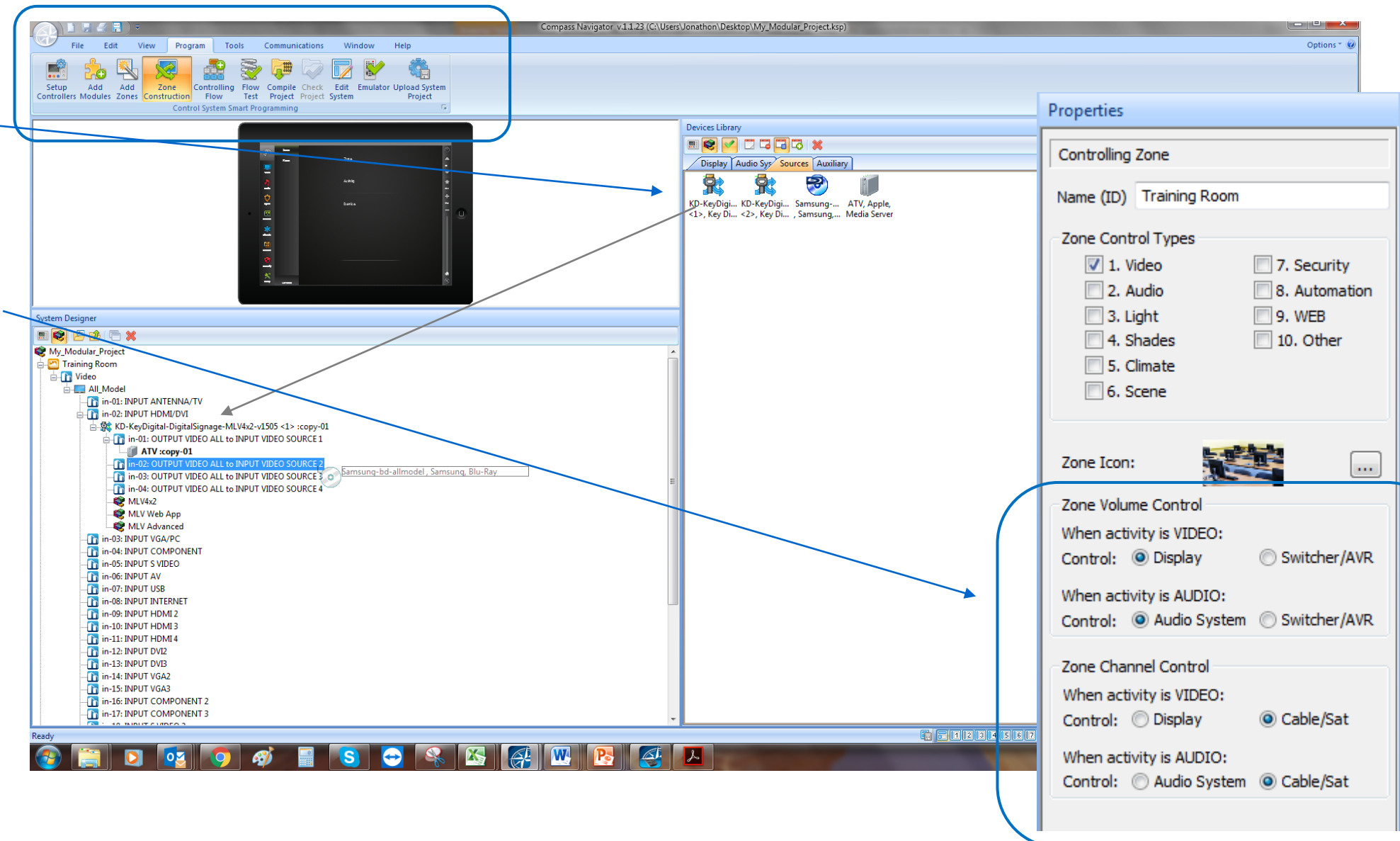
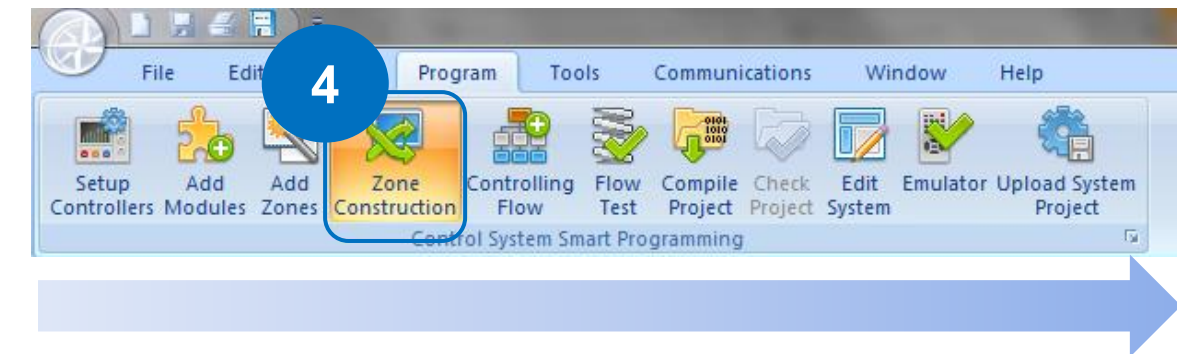


## Modular Programming Steps

- Work from Left to Right

### 4. Zone Construction

1. Drag devices into appropriate activity per zone
2. Construct A/V system bindings
3. Choose volume and channel devices



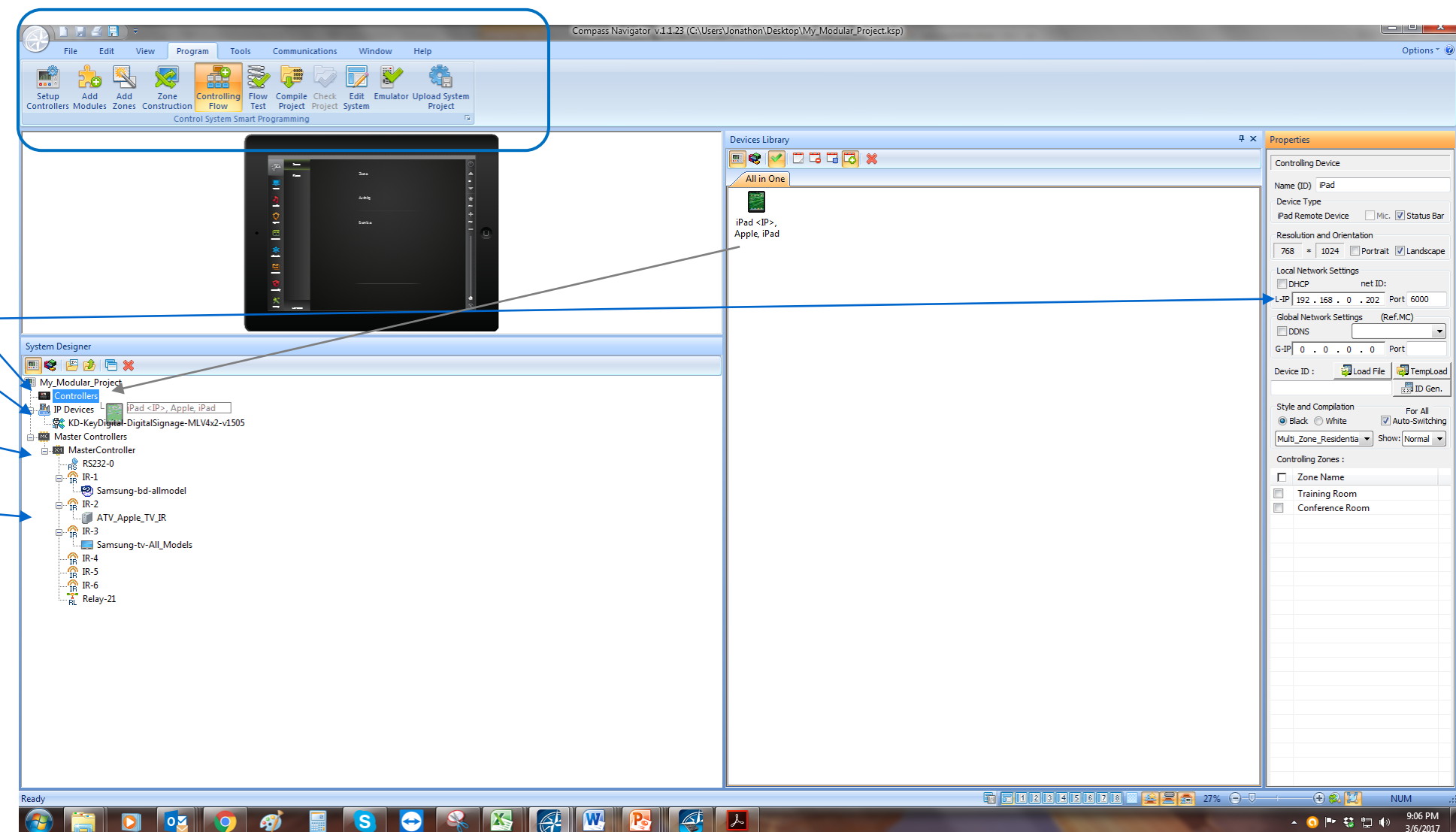
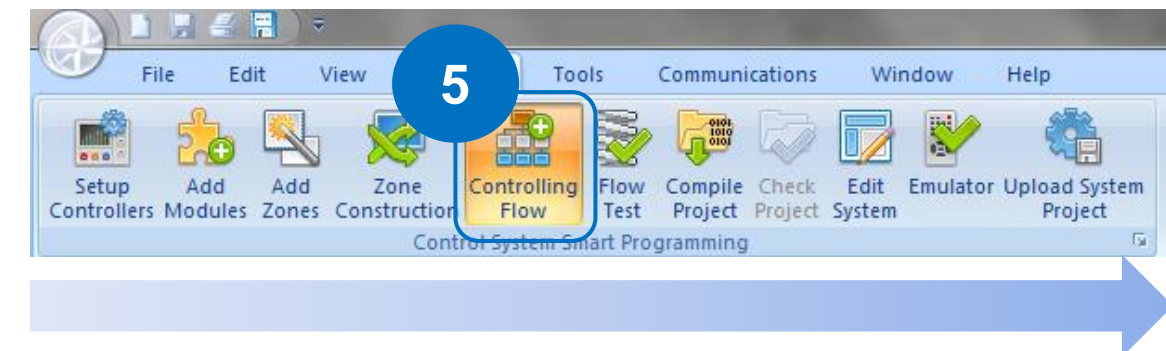
## Modular Programming Steps

- Work from Left to Right

### 5. Controlling Flow

1. Drag devices appropriately:

1. Controllers → iOS, Androids
2. IP Devices → IP Controlled
  1. Enter IP addresses!
3. Master Controllers → Compass HW
  1. IR devices to MC ports
  2. RS devices to MC ports
  3. Right-click to adj. port config





## Modular Programming Steps

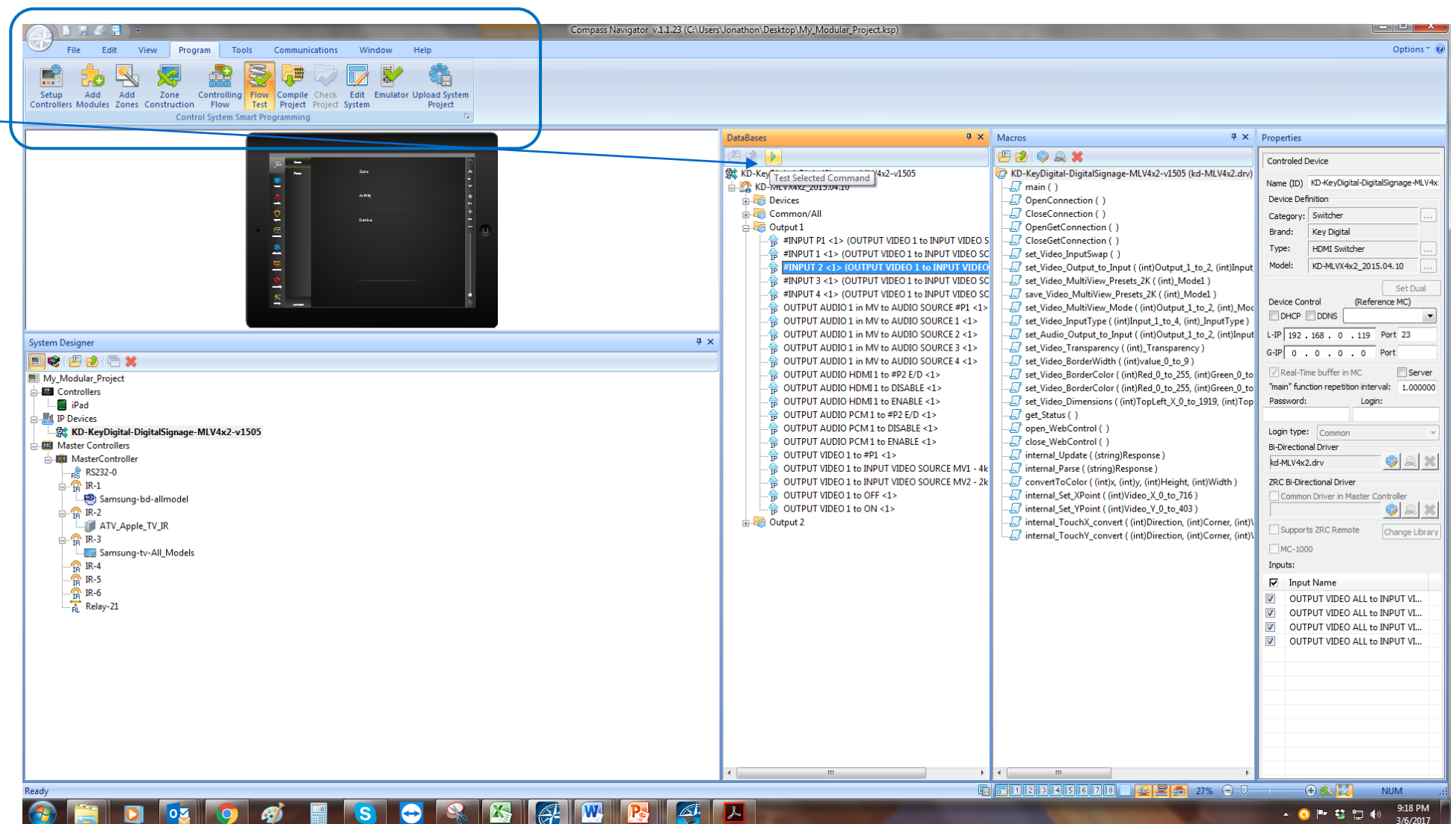
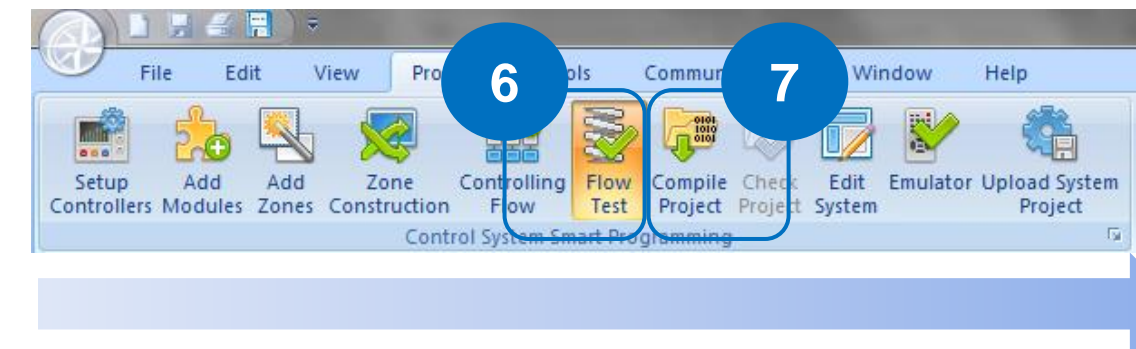
- Work from Left to Right

### 6. Flow Test (optional)

1. Test commands and wiring of system

### 7. Compile Project

1. Creates info file used by iOS/Android



## Modular Programming Steps

- Work from Left to Right

### 8. Edit System

#### 1. Change page names

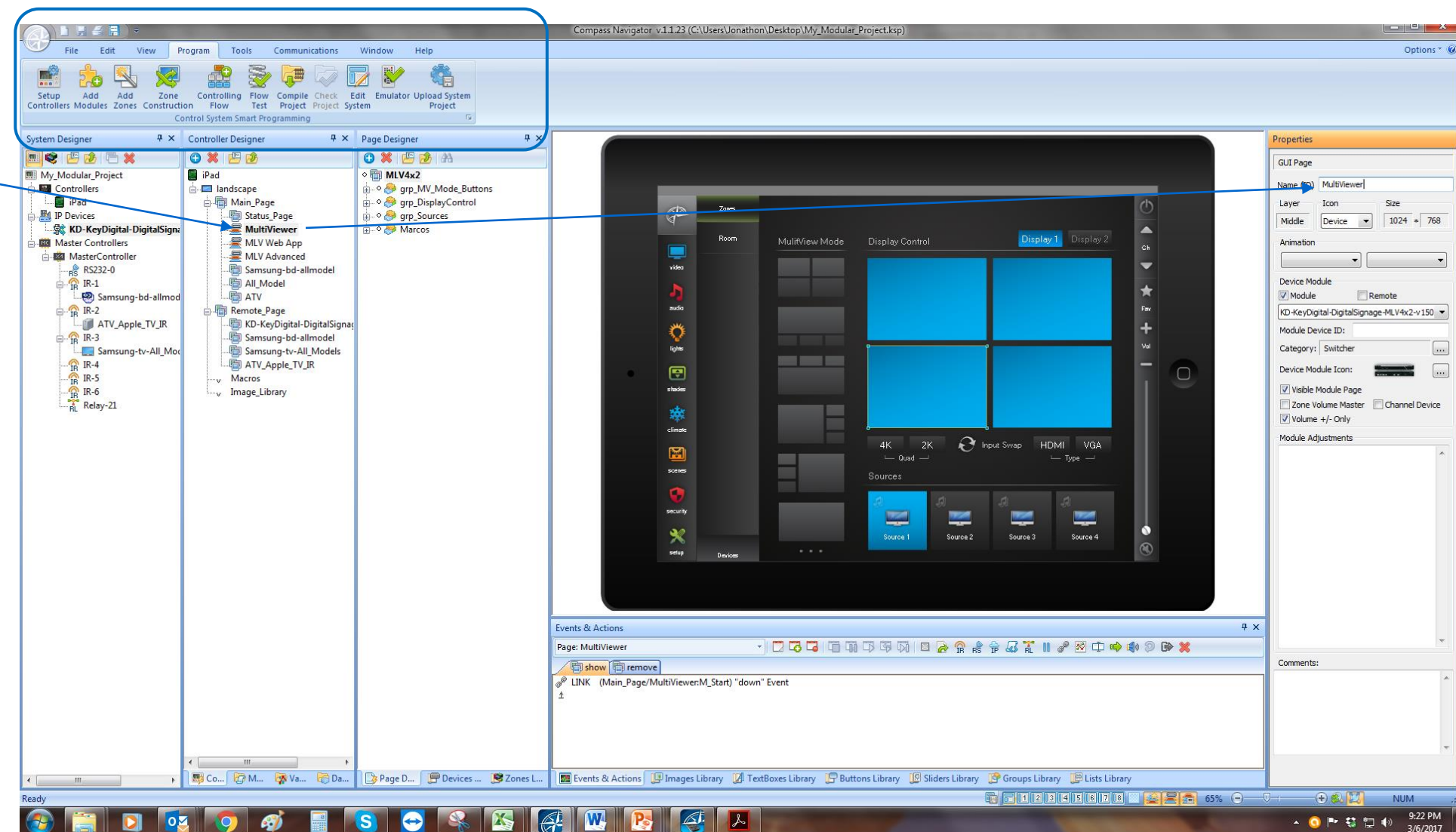
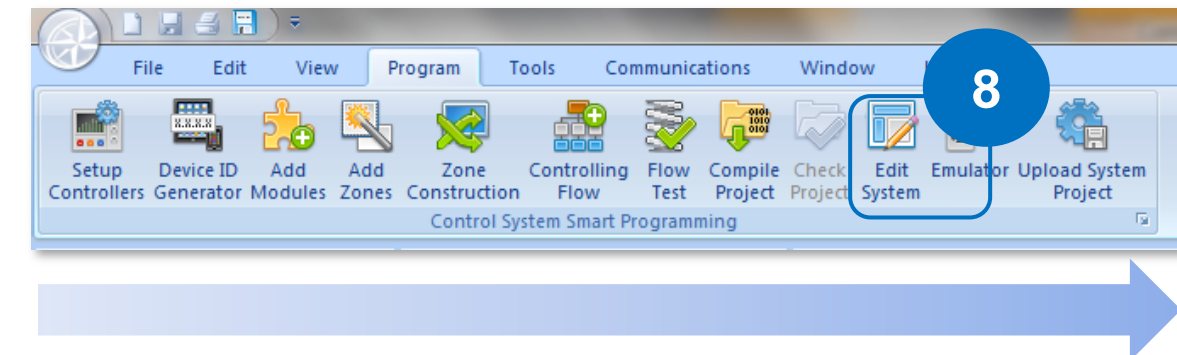
1. Re-compile after!

#### 2. Adjust GUI

1. Edit modules in .mod mode (8A)
2. Add logos/pics to Status\_Page
3. Edit Power Panel events (8B)

#### 3. Edit Modular Macro events

1. Variables → Modular Macros (8C)

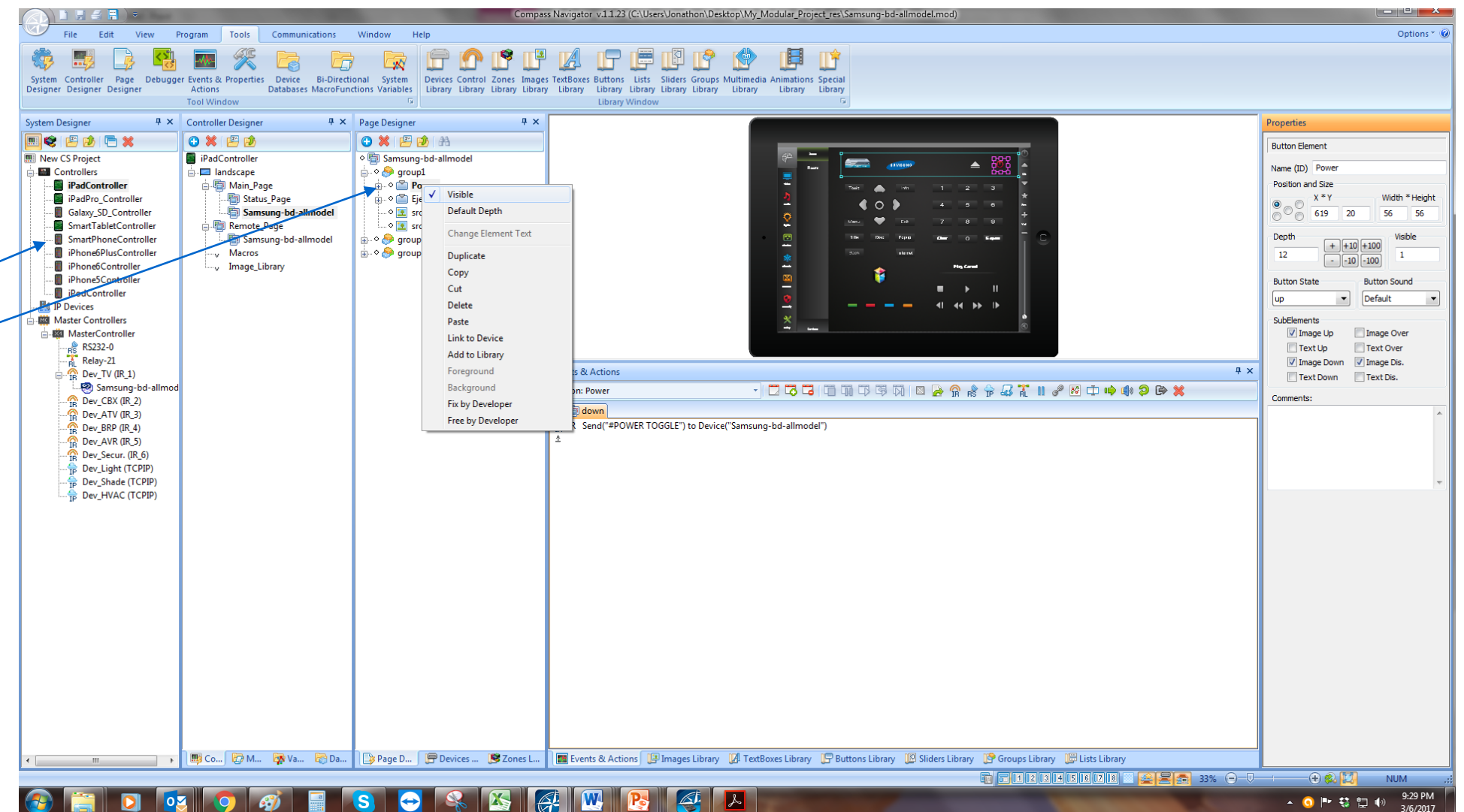
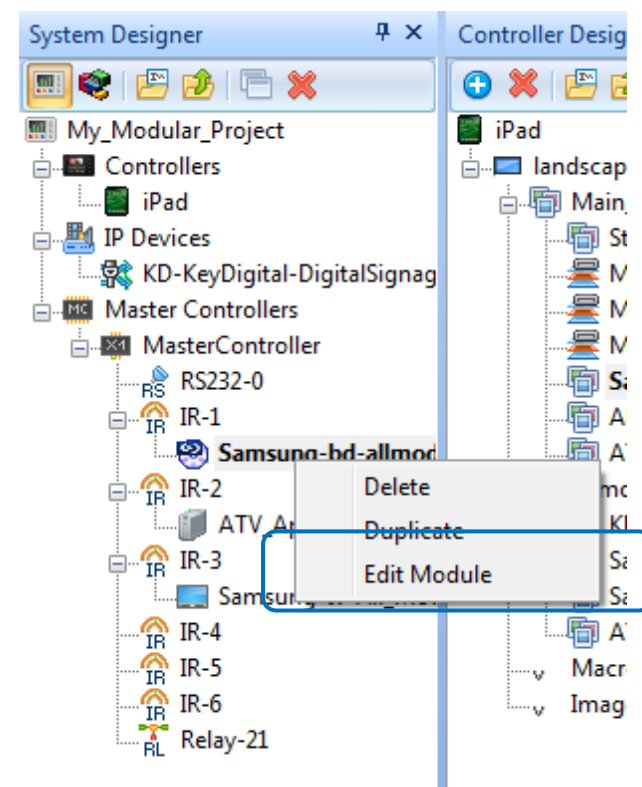


## Modular Programming Steps

### ■ Work from Left to Right

#### 8A. Edit modules (optional)

1. Right-click → Edit Module
2. Edit visibility, events & actions
3. Repeat per screen



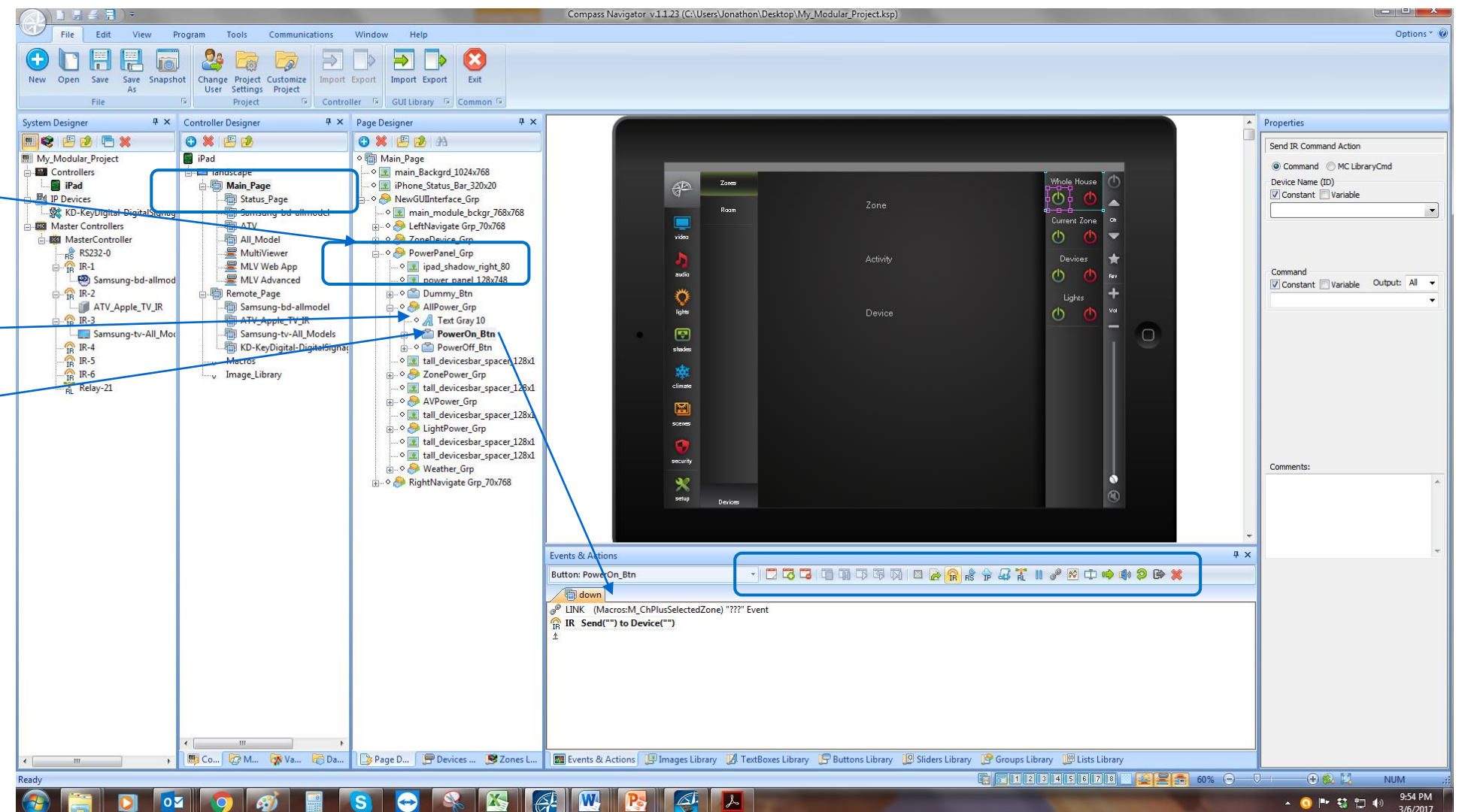


## Modular Programming Steps

- Work from Left to Right

### 8B. Edit Power Panel

1. Main\_Page → PowerPanel\_Grp
2. Make power panel visible
3. Edit text of each sub-group
4. Edit button events & actions
5. Delete unused sub groups
6. Make group invisible again



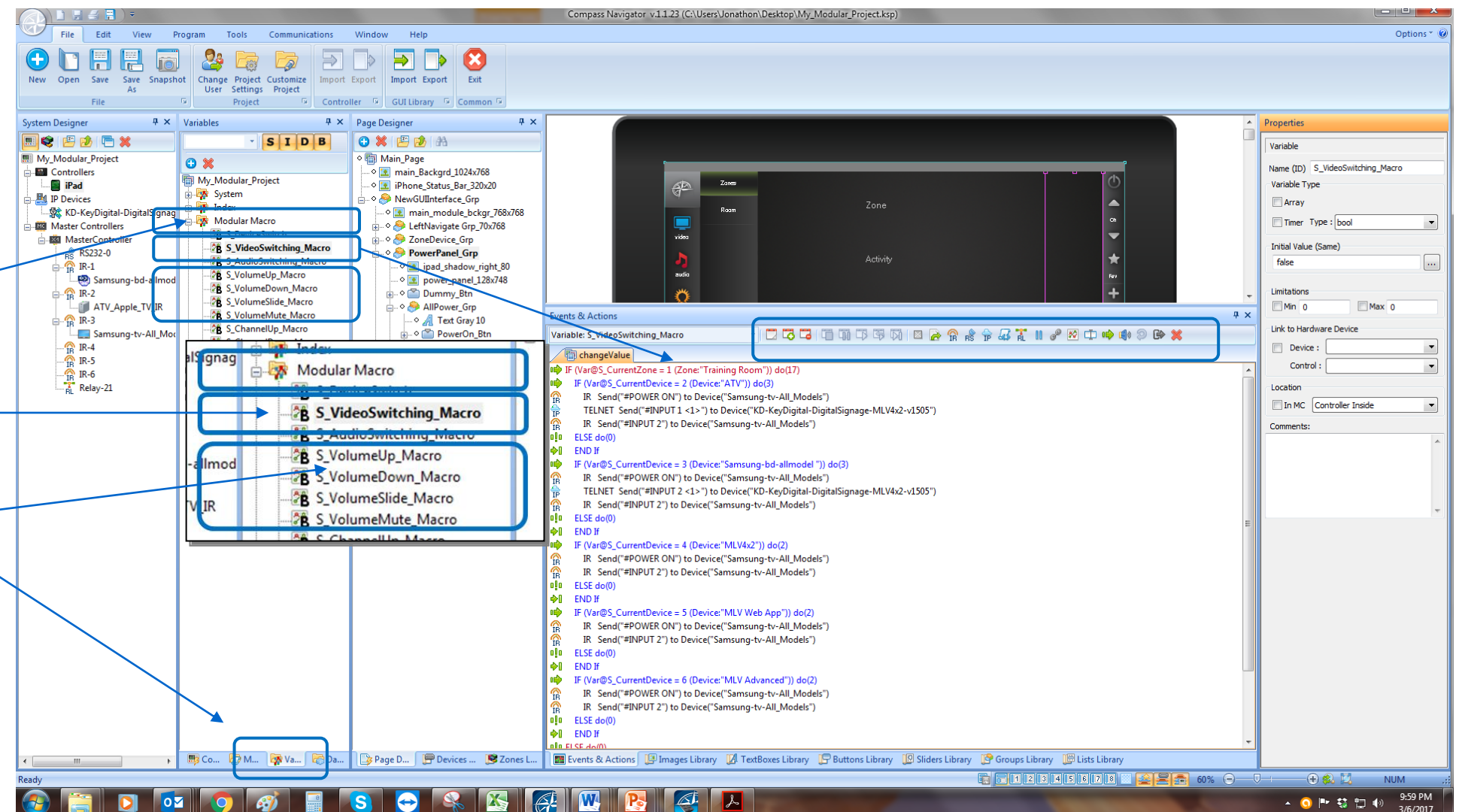
## Modular Programming Steps

- Work from Left to Right

### 8C. Edit Modular Macros

#### 1. Controller Designer Window

- Variables Tab
- Modular Macros folder
  - Video Switching, Audio Switching
    - Checks Zone and Device
  - Volume, Mute
    - Checks zone





## Modular Programming Steps

- Work from Left to Right

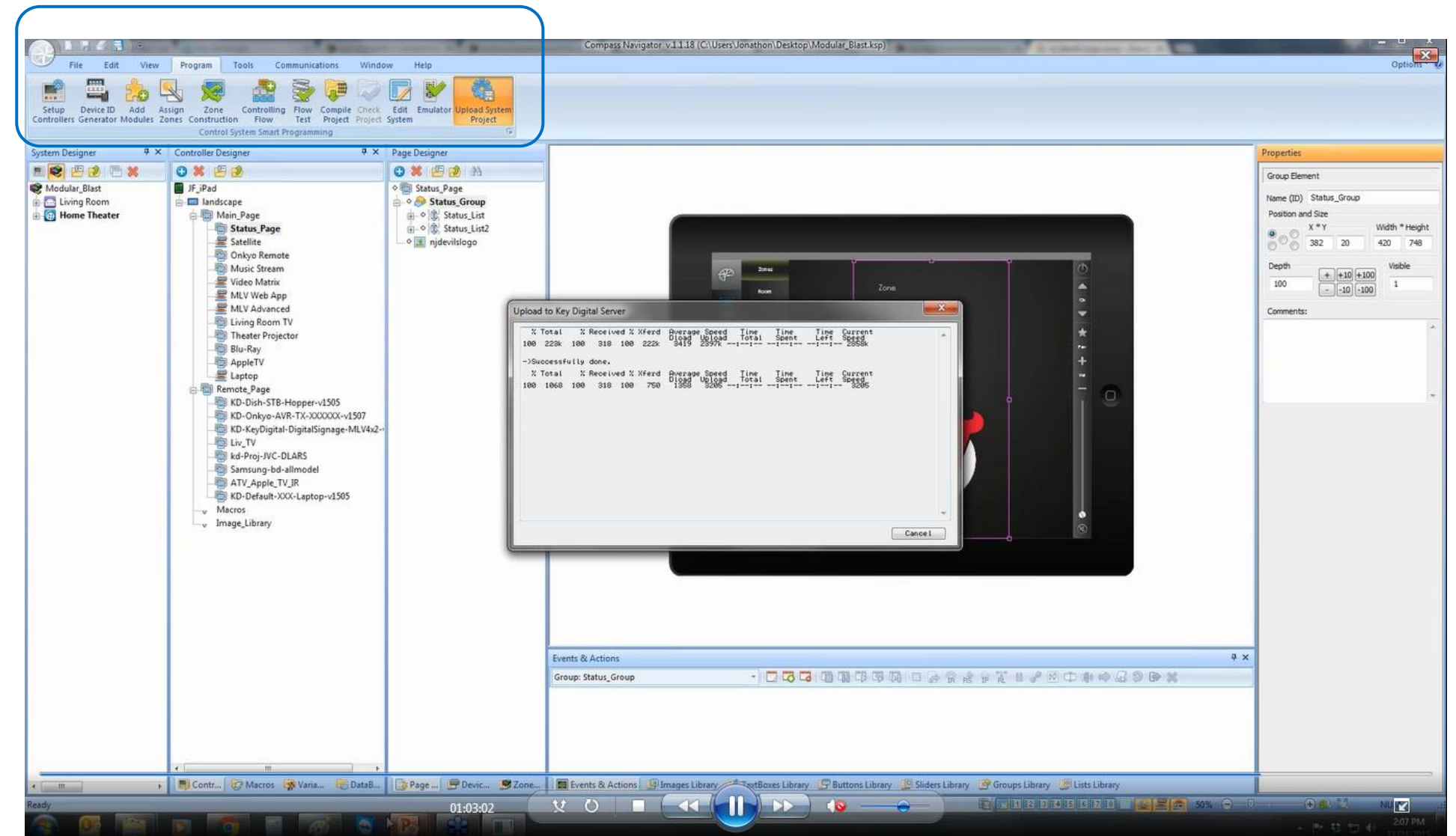
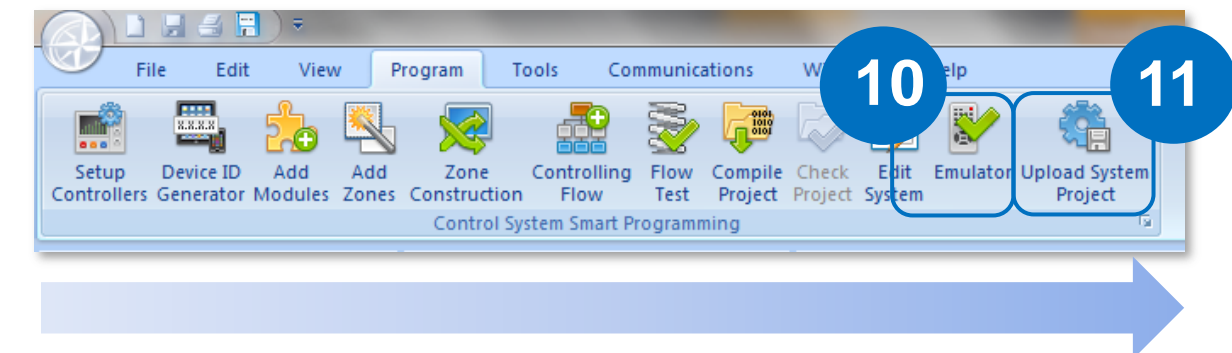
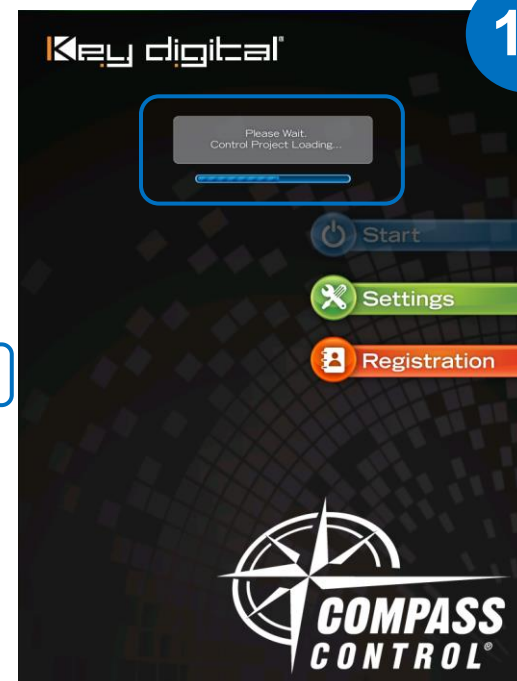
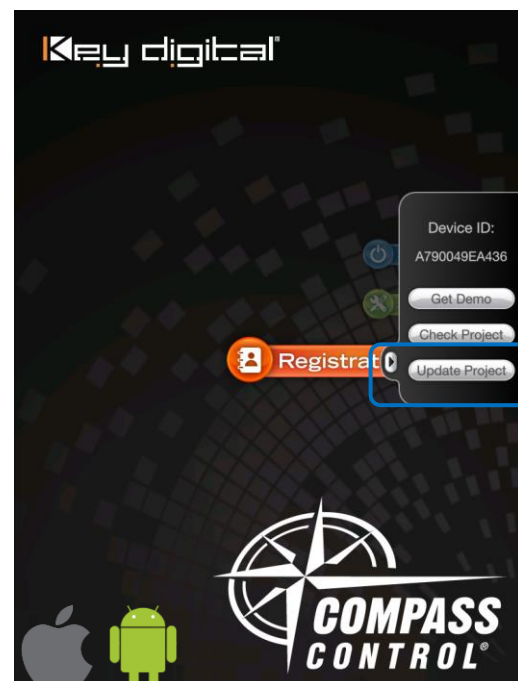
### 10. Emulator (optional)

1. Test GUI (optimized for custom GUI)

### 11. Upload System Project

1. Update project on iOS / Android

### 12. Update project in iPad/Android app





Thank You.